

BGA - Leadframes - C.O.B. - Optics - Wafers - pcb - Solar cells

NT SERIES

CLEAN

ETCH

PLASMA TREAT



Plasma technology utilized in manufacturing has a history dating back forty years. The applications for gas plasma technology continue to grow at an exponential rate. There are several reasons for this...

- ❑ Worldwide reduction of CFC's and other chemicals typically used for cleaning / etching in wet processes.
- ❑ Wide use of composite materials in manufacturing resulting in new challenges with bonding and adhesion.
- ❑ After initial investment plasma processes are more efficient and cost effective.
- ❑ Plasma provides a safer and cleaner surrounding for operators and is environmentally friendly.
- ❑ In some manufacturing environments plasma provides the only solution.

The NT series is a proven design and is our most versatile productline. High tech, flexibility and affordability have always been important assets at BSET. Whether you are doing R&D or full scale production runs there is an NT system designed for your application.

We have considerable notoriety fo special designs related to chamber architecture and your process needs.

No company in plasma can beat our design, quality or experience. BSET EQ offers laboratory services to help qualify its technologies for your applications. We are proud to extend these valuable services before and after ownership of our quality equipment and services.

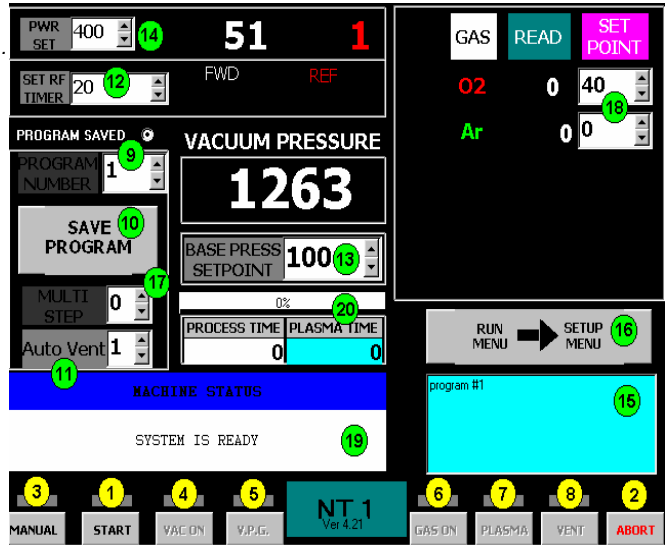
BSET EQ

SOLUTIONS THROUGH GAS PLASMA

1011 DETROIT AVE. SUITE A
CONCORD CA 94518 U.S.A.
Tel : 925-354-7270 Fax: 925-754-7392
<http://www.bsetplasmas.com>

UNIQUE CHAMBER DESIGN !!!!!

Provides superior cleanliness and plasma uniformity throughout the system .



USER FRIENDLY CONTROLLER !!!!!

Excerpt from manual shows screenshot of the NT controller above. All parameters are simultaneously displayed. System diagnostics, system status and process notes are standard features....

Each of the NT systems can be run in four plasma modes

- Down Stream ...The samples can be placed on a neutral shelf surface for a gentle plasma effect.
- Direct... The samples can be placed on the power or ground shelves for maximum effect.
- Directional... Samples requiring anisotropic etching or cleaning are placed on a special powered shelf.
- Special...Where parallel plate configurations do not serve as optimum configuration special electrode configurations can be supplied.

NT SERIES SPECIFICATIONS*					
	NT-1		NT-2		NT-3
SIZE (INCHES)	26L X 14W X 14H		28L X 26W X 26H		30L X 32W X 32H
WEIGHT	120 LBS		140 LBS		160 LBS
S/S CHAMBER	9W X 9H X 12L UP TO 4 SHELVES		12W X 12H X 20L UP TO 8 SHELVES		18W X 18H X 24L UP TO 12 SHELVES
GENERATOR	300 or 600 Watt		600, 1000 or 1500 Watt @ 13.56 MHz or 40 KHz		
PROCESS CONTROL	SBC CONTROLLER WITH UNLIMITED PROCESS STORAGE VIA HARD AND FLOPPY DRIVES, TFT DISPLAY, PRINTER PORT, SERIAL PORT, AND EXTERNAL VGA PORT.				
PUMP	3.2 CFM	11CFM	27 CFM	50 CFM	90CFM
OPTIONS	I. P. C. EXTERNAL DC BIAS DC BIAS / POWER DIVIDE TEMP MONITOR / CONTROL		ADDITIONAL GAS CHANNELS STATISTICAL PROCESS DATA AUTO DOOR TOUCH SCREEN / NETWORK		OIL FILTRATION OIL MIST ELIMINATOR EXHAUST ACCESSORIES PORT SWAP

* System specifications may change at any time. Consult the BSET EQ sales department for latest information. Shelf configuration should be discussed and qualified for your application prior to purchase.

The NT-1 is configured as a small throughput machine. The NT-1 is pictured on the front page of this brochure.

The NT-2 is configured as a medium size production unit.

The NT-3 is our large system suitable for mass production of BGA, flat panels, solar cells, leadframes or other applications. The NT-3 is pictured above.